



Cyrus 13.8 flybridge – Punta I

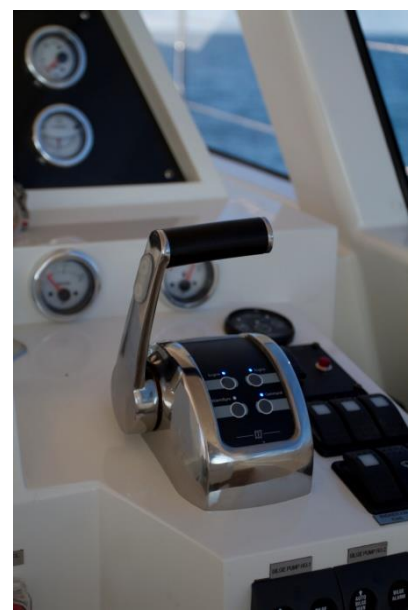
**Most elegant way to enjoy the breathtaking
beauties of Croatia's Adriatic sea**

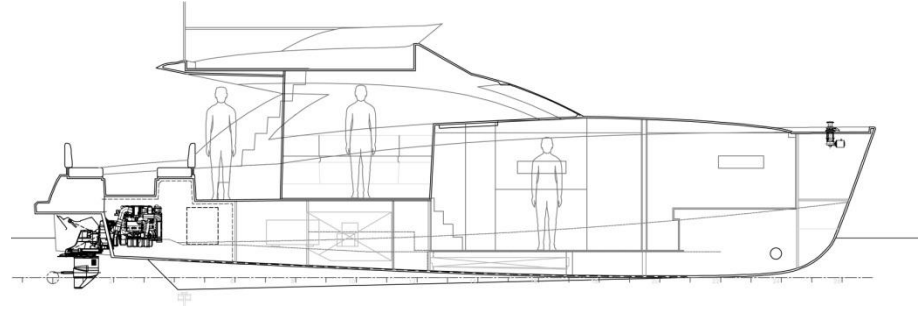
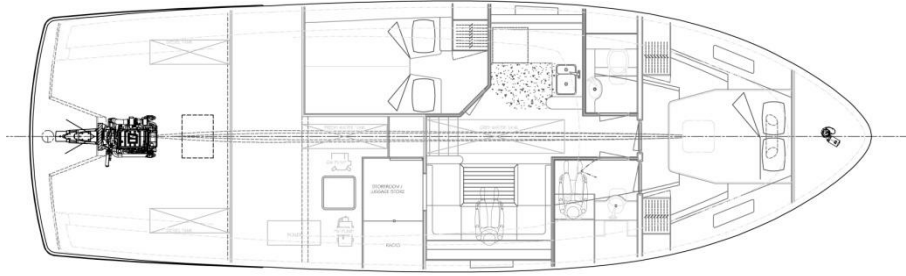
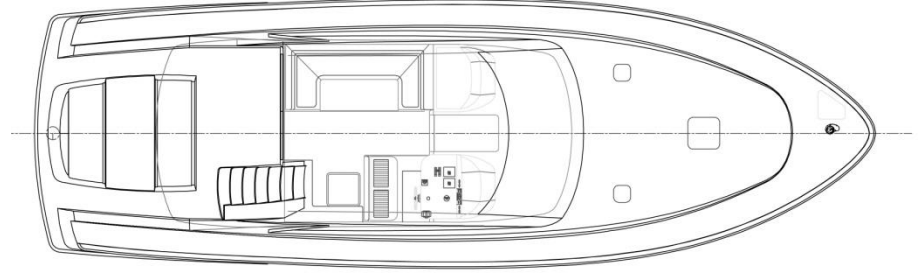
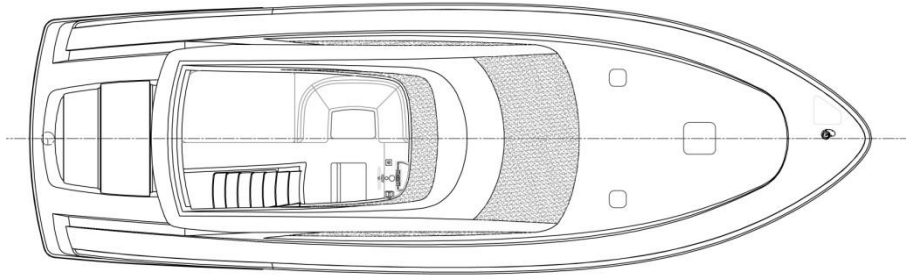












STANDARD SPECIFICATION

Builder:	Cyrus Yachts
Year built/refit:	2012./2019.
Length, overall	13.98m (45.86')
Length, waterline	12.90m(42.32')
Beam	4.45m(14.60')
Draft	0.85m (2.80')
Displacement	12 MT
Speed (max rpm, full load)	12KTS(25,5 km/h)
Cruising speed (1000 rpm, full load)	9KTS(16,68 km/h)
Fuel consumption @ cruise speed	20 litres
Fuel capacity	426 l (112 US gall)
Fresh water capacity	390 l (103 US gall)
Grey & Black water capacity	264 l (69 US gall)
People, (max. CE B)	10
Hull construction	GRP composite
Superstructure	GRP composite
Cat CE	B
Builder	Cyrus Yahts

DECK

On side decks, complete handrail with stainless steel cable railings.
Sun bed water resistant foam cushions.
Strong rubbing strake on hull and swim platform.
Engine room deck hatch and separate engine hatch for easy servicing.
Separate chain locker compartment.
One deck shower.
One bathing ladder.
Exterior dining table and sitting area.
Flybridge sunbed.
Flybridge steering console.
Flybridge access from aft exterior cockpit.

INTERIOR

Spacious double bed in master cabin.
Separate master cabin bathroom with own toilet.
Double bed in guest cabin.
Wide shower with separate door and hot and cold water.
Separate Dayhead with a combined shower/sink for guests.
One hatch for fresh air in Master, Bathroom and Dayhead.
One four persons dining table in cockpit convertible to a double bed.
Galley with one large locker for food /dishes, cooktop, cooker hood, Fridge, Microwave.
CRUISAIR air conditioned units with separate digital control.

ENGINE, DRIVE AND STEERING

Steyr 258 HP/ 4000 o/min model SE266E40
Generator Fisher Panda 12kW.
Steering wheel system and controls from VETUS.
Bow thruster Vetus 9524C.

NAVIGATION AND COMMUNICATION EQUIPMENT

One GPS RAYMARINE e7 on main steering station and One GPS RAYMARINE e7 flybridge steering console.
One Manual compass RICHIE TR35 and secondary compass at flybridge.
One Hand held VHF with its charger
Raymarine Autopilot